

Your partner
for printing
excellence



PAPER & PRINTING

Belting
Solutions



LEADING CONVEYOR & PROCESS BELTS FOR **PRODUCTION EFFICIENCY**

CHIORINO manufactures a complete range of products for all applications in Paper & Printing.

- Conveyor and process belts
- Folder belts
- Machine tapes
- Seamless belts
- Timing belts

The CHIORINO deep technical knowledge combined with the advanced R&D activity offer ideal solutions for all production segments.

- Paper converting
- Folder-glueers for carton boxes
- Corrugated carton boxes production
- Printing, graphic and publishing
- Tube winders



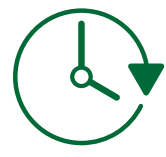
**HIGHEST
EFFICIENCY**



**PRODUCTION
PRECISION**



**HIGH
SPEED**



**EXTENDED
SERVICE LIFE**

SUSTAINABILITY

Chiorino develops fully environmental-friendly belting solutions that guarantee **highly sustainable performances** for paper & printing processing, reducing the use of natural resources, such as energy and water, avoid the use of adhesives for belt installation, minimizing product waste and cutting downtimes. The best sustainability performance also translates into **optimized cost of ownership**.



ENERGY
SAVING



REDUCED
PRODUCT WASTE



NO ADHESIVES
REQUIRED



MINIMIZED
DOWNTIMES



CHIORINO IS MEMBER OF



CHIORINO 360° UNIQUE &

**Production
efficiency**



**Optimized
Cost of
Ownership**



Food Safety



CHIO
19
Passion for



& MATCHLESS SOLUTIONS



Sustainability



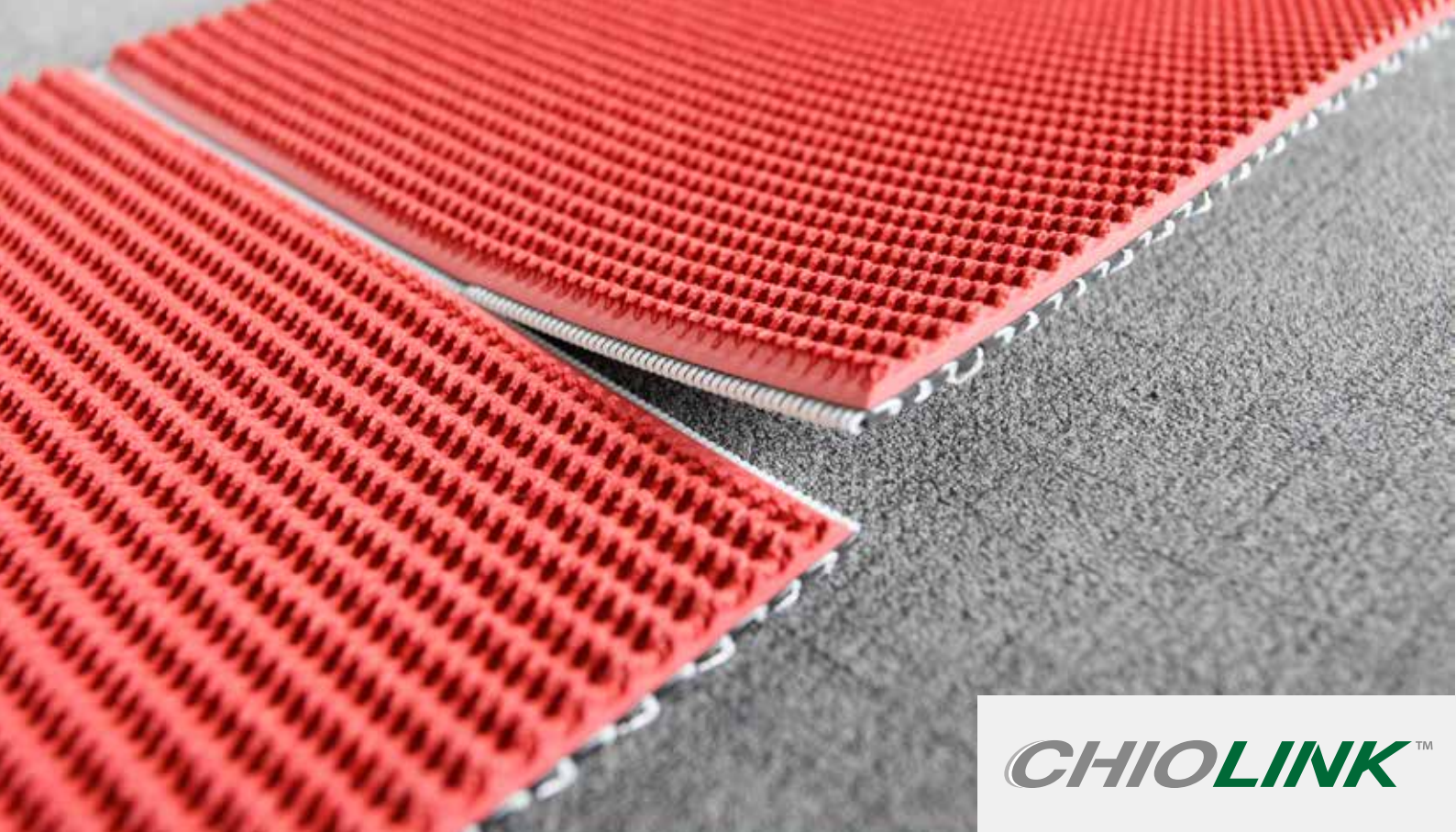
RINO[®]
06
or belting



**Risk
management**



Industry 4.0



CHIOLINK™

Quick splice. High performance belts

CHIOLINK™ is a premium solution for **minimizing downtime** and **increasing production efficiency**. Thanks to the special construction it can be made endless onsite **very quickly** and in a **unique safe way**.

CHIOLINK™ high performing elastomer covers combined with a **patented** solution for a quick & safe splicing is a **breakthrough for belting efficiency**.



**QUICK &
SAFE
SPLICING**



**SUPERIOR
ELASTOMER
& TPU COVERS**



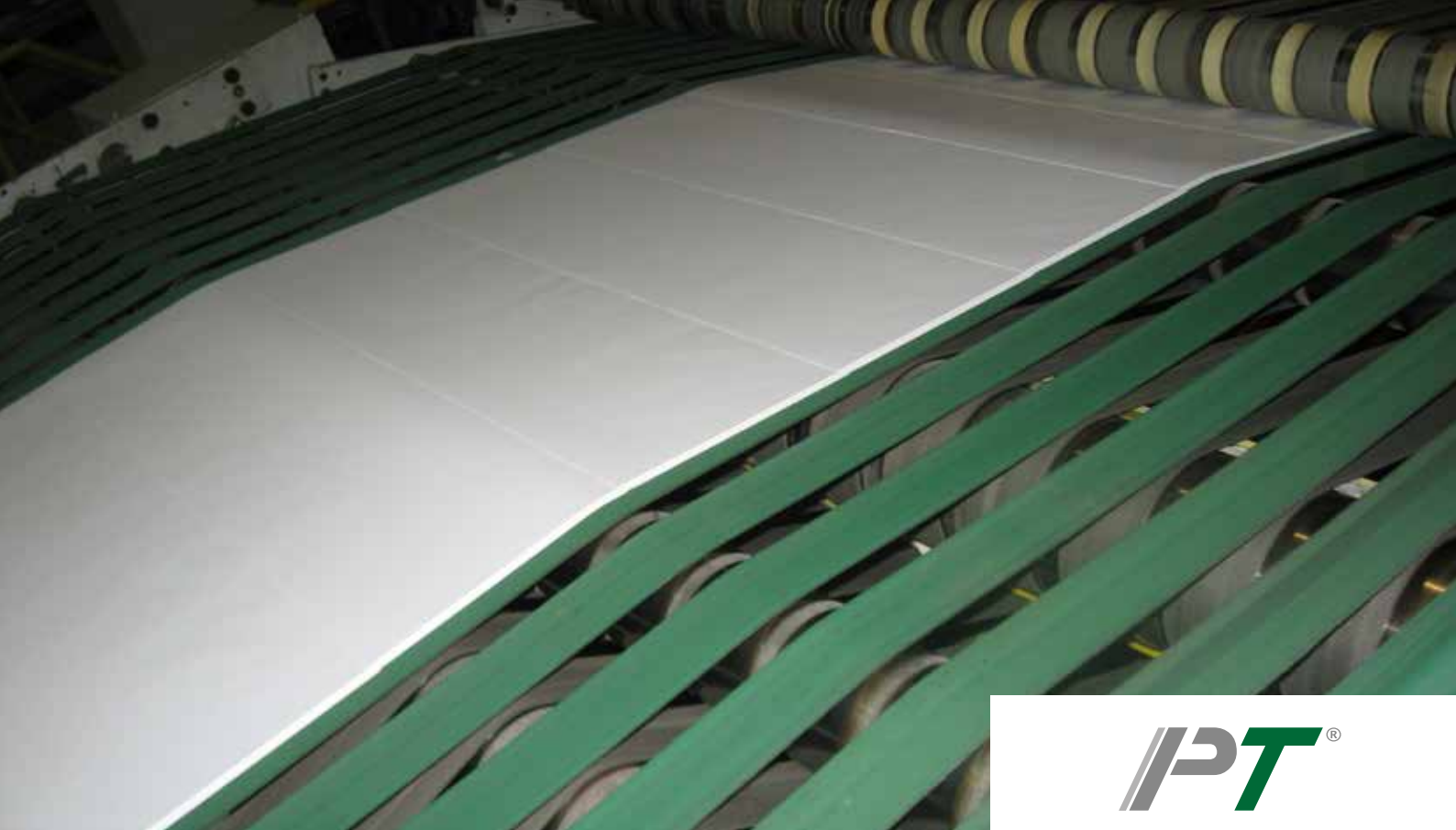
CHIOLINK™

CHIOLINK™
SPLICING KIT



Tools available in a handy case,
with all necessary equipment
for the Chiorino exclusive
Joining system.

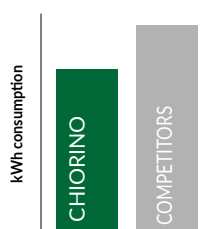




Fast Joint. Thermoplastic machine tapes

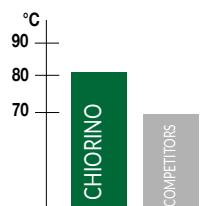
Reduced energy consumption

Chiorino PT® machine tapes consume less energy compared with competitors thermoplastic belts, thanks to the highly flexible CHIO-TPE™ intermediate layer.



High temperature resistance

Chiorino PT® machine tapes provide a higher temperature resistance compared with competitor thermoplastic belts, thanks to the unique CHIO-TPE™ intermediate layer.

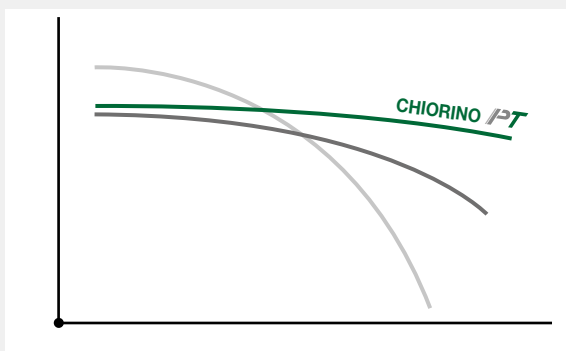


Reliable FASTJOINT

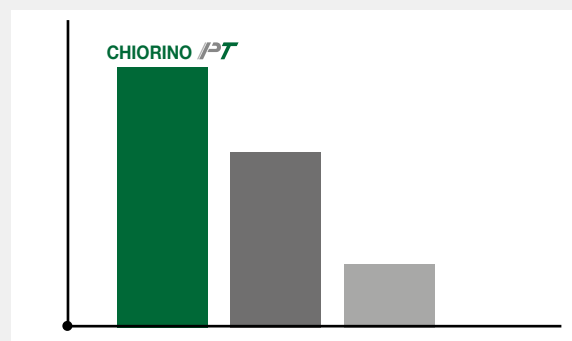
The FAST JOINT technology in combination with the new CHIO-TPE™ intermediate layer, enables easy on-site joining, high reliability and long service life.



Resistance to abrasion (Taber Test)



Life time





Unique **high efficiency** elastomer

High abrasion resistance

The unique HS® friction covers provide an excellent abrasion resistance and a uniform coefficient of friction over time.

Excellent resilience

The unique HS® elastomer offers outstanding resilience, high elasticity and crack resistance.

Long service life

Thanks to the low aging property of the cover Chiorino HS® belts provide a long service life.

CHIORINO HS®

TRADITIONAL
ELASTOMER



CHIORINO HS®

TRADITIONAL
ELASTOMER



Certified Food Compliance

The **HS** food grade belts are ideal for aseptic packagings for food and pharmaceutical use.

They comply with the latest european and international food regulations.

Fast Joint

The **HS** thermoplastic blue belts are ideal for corrugated carton box folder-glueers and for any application where a high coefficient of friction is required. The **thermoplastic TPU interply** allows a quick splicing on site **minimizing downtime**.

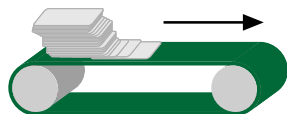




Self-regenerating premium elastomer

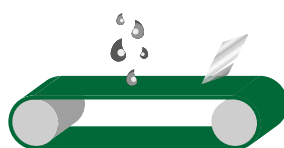
Consistent coefficient of friction

The special MF® elastomer offers high production precision thanks to the consistently high coefficient of friction.



High abrasion resistance

The MF® elastomer offers excellent resistance to abrasion, oils, inks and chemicals.



Long service life

MF® is a self-regenerating elastomer that maintains its properties during time and assures longer service life compared to traditional elastomer.

CHIORINO MF®

TRADITIONAL ELASTOMER



The unique MF® self-regenerating premium elastomer is ideal for processing any kind of paper. It is used for foldergluer introduction, stackers and carton folding.

- Conveyor belts
- Seamless belts
- Timing belts





Paper converting

CHIORINO manufactures a wide range of specialized products for paper converting.

CROSS CUTTERS

- **PT®** Thermoplastic Fast Joint machine tapes.
- Low friction belts with polyamide traction core providing high capability of accumulation.

CORE WINDERS

- **DG-E HS®** Fast Joint belts with polyester traction core and thermoplastic elastomer covering.
- **DG HS®** belts with polyamide traction core and excellent resistance to abrasion.

TISSUE

- Low friction belts with non marking surface for tissue production (handkerchief, napkins, toilet paper etc.)

Benefits



Excellent resistance to abrasion



Reliable Fast Joint



Highest feed precision with any type of paper



Reduced energy consumption

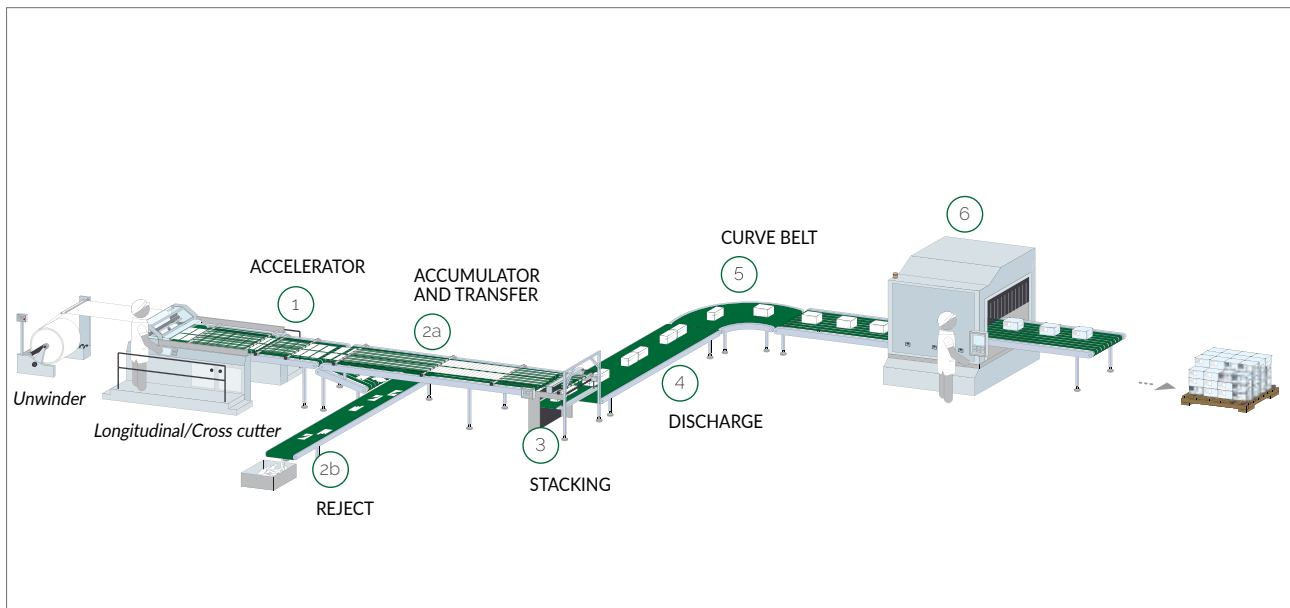


Non marking

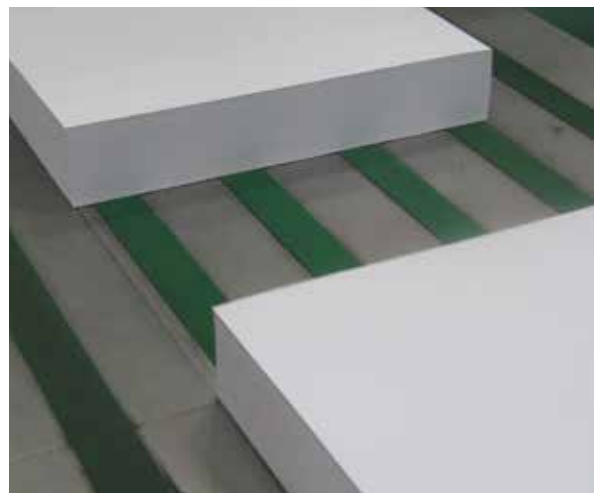
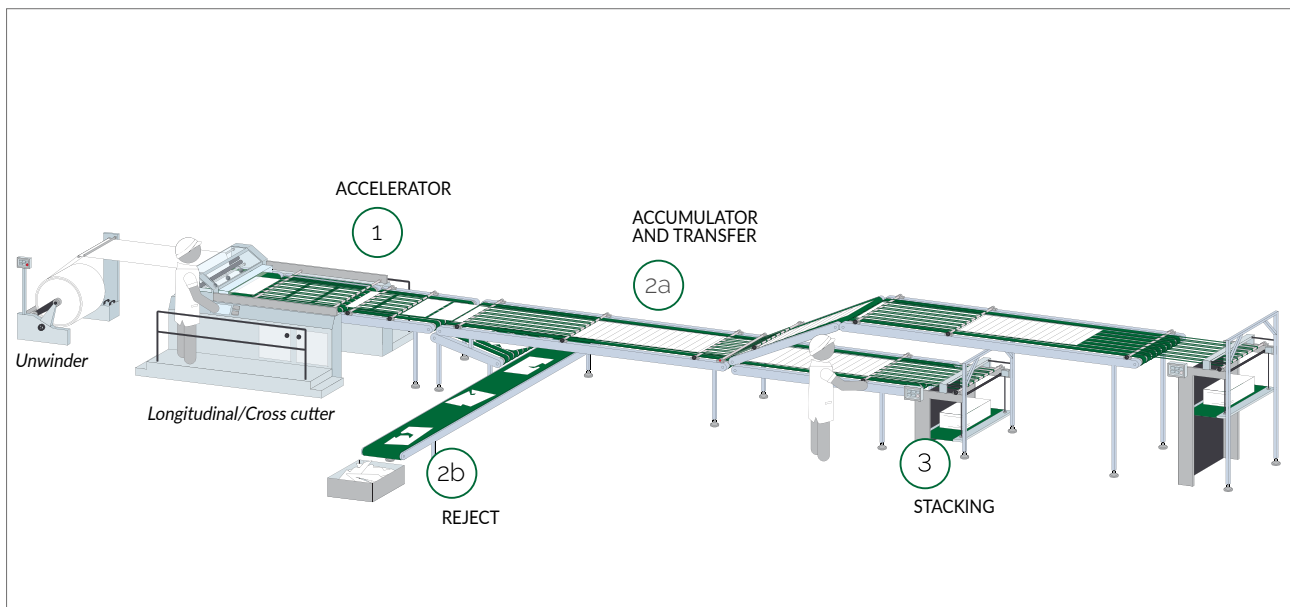


Long service life

Cross cutter for small format



Cross cutter for big format





Carton box folder-gluers

CHIORINO manufactures a wide range of specialized products for carton box production.

FEEDING

Seamless belts with **MF**[®] elastomer cover that maintains high friction capabilities and efficient feeding even on the fastest machines. Available with different versions of the **MF**[®] cover according to the type of material to be processed:

- **HS W white** (40 Sh.A)
- **L raspberry** (35 Sh.A)
- **R red** (45 Sh.A)

FOLDING-GLUEING

- **DG-E HS**[®] **Fast Joint** thermoplastic folder belts with traction core in polyester and **HS**[®] elastomer covering.
- **DG HS**[®] folder belts with traction core in polyamide and **HS**[®] elastomer covering that prevents cuts and surface crackings.
- **DG HS**[®] **Food Grade** folder belts compliant with the latest european and international food regulations.

COMPRESSION belts in PVC or elastomer.

Benefits



Excellent resistance to inks and chemicals



Ideal for high speed machines



Excellent traction properties



Food grade version available

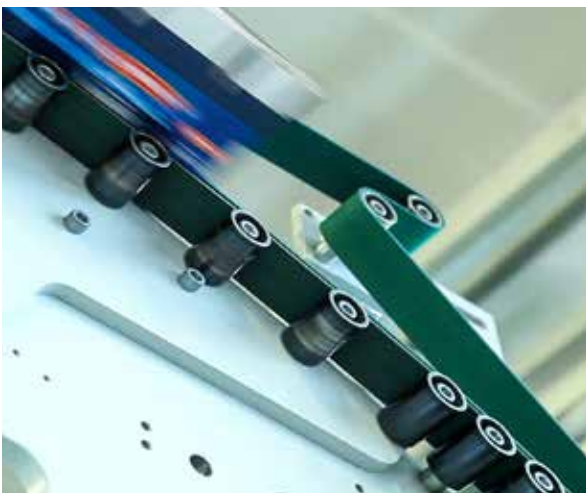
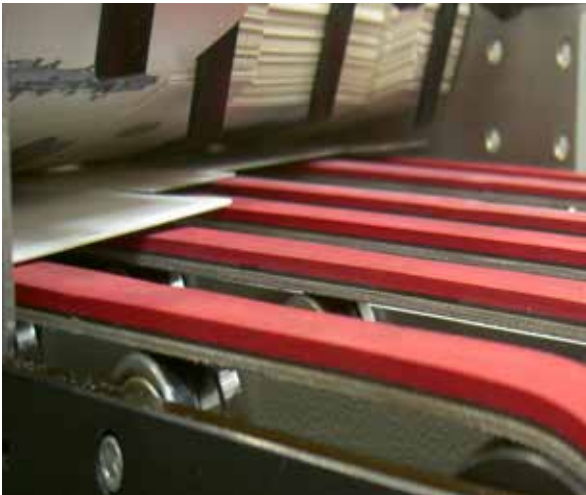
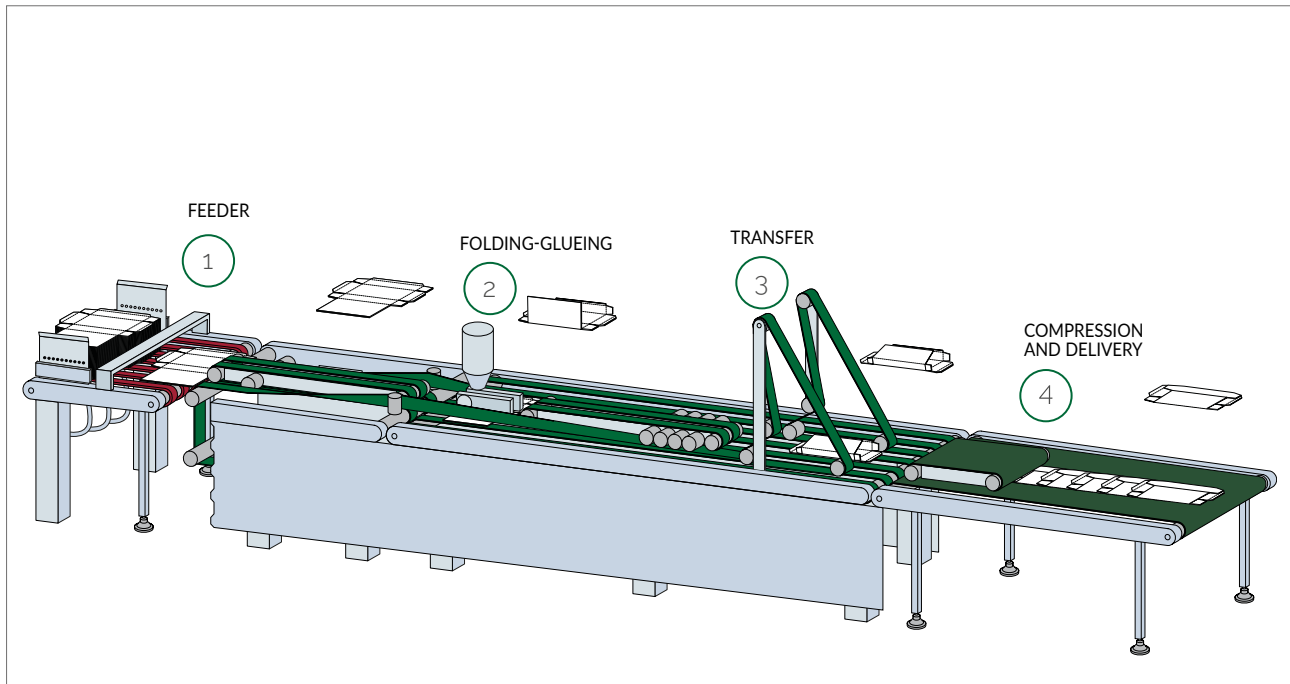


Highest resistance to abrasion



Long service life

Folder-gluer for carton box





Corrugated carton boxes

CHIORINO manufactures a wide range of specialized products for corrugated carton box production.

HS® elastomer conveyor and folder belts with high resistance to abrasion and excellent traction capability.

Belts with **MF®** self-regenerating elastomer covering that offer a very high coefficient of friction and absolute precision feed of corrugated carton boxes.

CHIOLINK™ is the combination of a spiral polyester carcass and CHIORINO superior elastomer covers.

It can be easily cut at any length and made endless on site, without the use of glues.

PVC belts with high resistance to abrasion, high traction capability and high flexibility.

Benefits



Excellent traction capability



Permanent antistatic



Highest resistance to abrasion



Downtime minimization

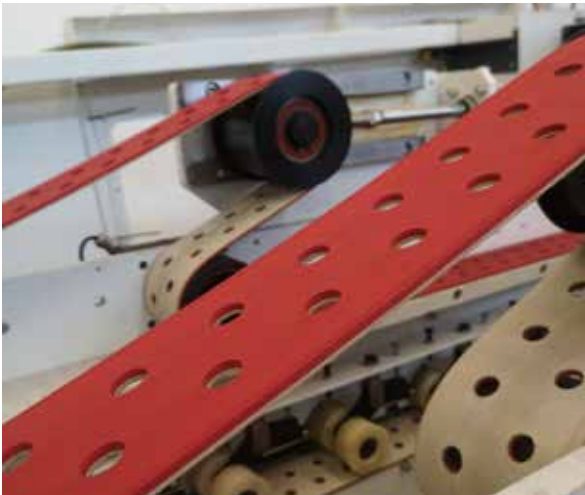
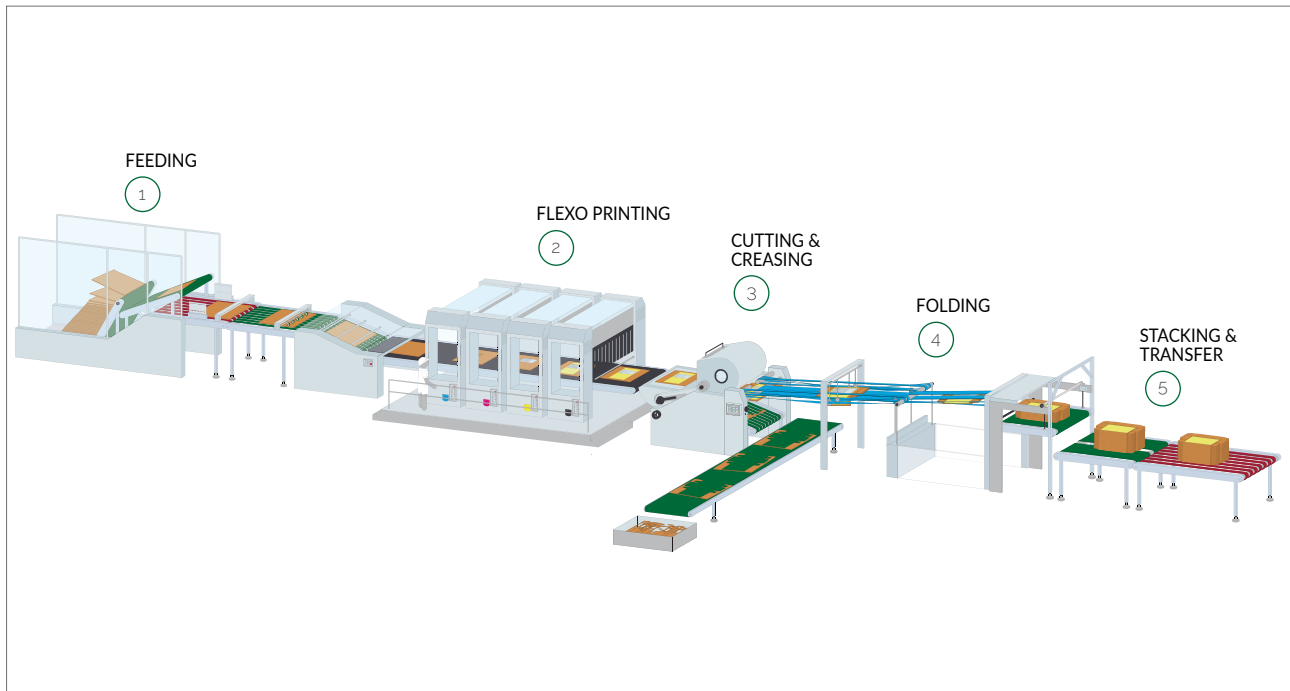


Excellent resistance to inks and chemicals



Long service life

Flexo-folder gluer for corrugated carton boxes





Printing industry

CHIORINO manufactures a wide range of specialized products for the graphic, publishing and printing industry.

- **NEWSPAPERS / MAGAZINES PRINTING AND PAGE FOLDING**
- **CATALOGUES OFFSET PRINTING**
- **BOOKBINDING**

HS® elastomer conveyor and folder belts with high resistance to abrasion and excellent traction capability.

PT® Thermoplastic Fast Joint machine tapes.

CHIORINO thermoplastic machine tapes can be made endless on site with the **FAST JOINT** equipment, in a few minutes and without use of adhesives, minimizing machine downtime.

Benefits



Excellent resistance to inks and chemicals



Non marking



Excellent traction capability



Downtime minimization



Highest resistance to abrasion



Long service life



With the Chiorino FAST JOINT equipment, **PT®** belts can be made endless on site in a **few minutes, without adhesives, reducing the maintenance time.**



Kit Fast Joint P50 FJ

Press with two heated platens, suitable for splicing Chiorino thermoplastic conveyor and transmission belts, that are max. 40 mm wide and 3 mm thick.

Plates sizes (w x l)	50 x 50 mm
Press weight	1.4 kg
Holding plates	2 (20 and 25 mm)
Fastening clamps	2
Cooling clamp	1



Kit Fast Joint P120 FJ

Press with two heated platens, suitable for splicing Chiorino thermoplastic conveyor and transmission belts, that are max. 80 mm wide and 6 mm thick.

Plates sizes (w x l)	100 x 140 mm
Press weight	4 kg
Holding plate	2 (30 and 35 mm)
Fastening clamps	2
Cooling clamp	1



Production program

Code	Type	Traction core (1)	Top cover	Bottom cover	Permanent antistatic (UNI EN ISO 21179)	Total thickness	Weight	Min. diameter (2)	Pull for 1% elongation	Min. temperature resistance	Max. temperature resistance	Comparative coefficient of friction (3)
						mm	kg/m ²	mm	N/mm	°C	°C	



NA1133	2M8 U0-U-G5 HS FL	PET	Synthetic elastomer	●	Fabric with TPU impreg.	●	✓	2.00	2.40	25	8	-20	100	MF
NA1134	2M8 U0-U-G15 HS FL	PET	Synthetic elastomer	●	Fabric with TPU impreg.	●	✓	3.00	3.40	50	8	-20	100	MF
NA1620	2M12 U0-U-G30 HS EN blue	PET	Synthetic elastomer	●	Fabric with TPU impreg.	○	✓	4.30	4.50	50	12	-20	100	HF
NA1135	2T12 U0-U-G10 HS FH	PET	Synthetic elastomer	●	Fabric with TPU impreg.	●	✓	2.20	2.20	50	12	-20	100	HF
NA1136	2T12 U0-U-G25 HS GP	PET	Synthetic elastomer	●	Fabric with TPU impreg.	●	✓	5.50	4.50	80	12	-40	100	HF
NA1137	2T12 U0-U-G35 HS GP	PET	Synthetic elastomer	●	Fabric with TPU impreg.	●	✓	6.50	6.50	80	12	-40	100	HF
NA1432	3M8 U0-U-G10 HS FL	PET	Synthetic elastomer	●	Fabric with TPU impreg.	●	✓	3.50	3.70	60	10	-20	100	MF
NA1559	3M18 U0-U-G40 HS GP blue	PET	Synthetic elastomer	●	Fabric with TPU impreg.	○	✓	7.70	7.60	90	18	-20	100	HF
CG353	DG1/70 HS GP blue	PA	Synthetic elastomer	●	Synthetic elastomer	●	✓	6.50	6.00	75	5	-20	100	HF
CG181	DG2/70 HS GP blue	PA	Synthetic elastomer	●	Synthetic elastomer	●	✓	6.50	6.00	100	7.5	-20	100	HF
NA1404	NT1 HS L	PA	Synthetic elastomer	●	Fabric with TPU impreg.	●	✓	1.00	1.20	15	3	-20	100	MF
NA1138	NT1 HS	PA	Synthetic elastomer	●	Fabric with TPU impreg.	●	✓	1.20	1.30	15	3	-20	100	MF
NA1139	NT2 HS	PA	Synthetic elastomer	●	Fabric with TPU impreg.	●	✓	2.00	2.10	20	3.5	-20	100	MF
NA1140	NT3 HS	PA	Synthetic elastomer	●	Fabric with TPU impreg.	●	✓	3.00	3.20	40	6	-20	100	MF
NA1141	NT4 HS	PA	Synthetic elastomer	●	Fabric with TPU impreg.	●	✓	4.00	4.30	60	6	-20	100	MF
CG344	T4R HS	PA	Synthetic elastomer	●	Synthetic elastomer	●	✓	3.90	4.50	150 ⁽⁴⁾	12.5	-20	100	MF
CG296	DG-E 10/30 HS	PET	Synthetic elastomer	●	Synthetic elastomer	●	✓	3.00	3.50	30	15	-20	80	MF
CG297	DG-E 10/40 HS	PET	Synthetic elastomer	●	Synthetic elastomer	●	✓	4.00	5.00	40	15	-20	80	MF
CG298	DG-E 10/50 HS	PET	Synthetic elastomer	●	Synthetic elastomer	●	✓	5.00	6.00	60	15	-20	80	MF
CG299	DG-E 10/60 HS	PET	Synthetic elastomer	●	Synthetic elastomer	●	✓	6.00	7.00	60	15	-20	80	MF
CG289	DG1/15 HS	PA	Synthetic elastomer	●	Synthetic elastomer	●	✓	1.60	1.80	20	5	-20	100	MF
CG290	DG1/30 HS	PA	Synthetic elastomer	●	Synthetic elastomer	●	✓	3.00	3.40	30	5	-20	100	MF
CG291	DG1/40 HS	PA	Synthetic elastomer	●	Synthetic elastomer	●	✓	4.00	4.60	40	5	-20	100	MF
CG292	DG2/20 HS	PA	Synthetic elastomer	●	Synthetic elastomer	●	✓	2.40	2.80	40	8	-20	100	MF
CG293	DG2/30 HS	PA	Synthetic elastomer	●	Synthetic elastomer	●	✓	3.20	3.70	40	8	-20	100	MF
CG294	DG2/40 HS	PA	Synthetic elastomer	●	Synthetic elastomer	●	✓	4.00	4.80	50	8	-20	100	MF
CG295	DG2/60 HS	PA	Synthetic elastomer	●	Synthetic elastomer	●	✓	5.50	6.30	60	8	-20	100	MF
CG327	DG1/30 HS Food Grade	PA	Synthetic elastomer	●	Synthetic elastomer	●	✓	3.00	3.40	30	5	-20	100	MF
CG326	DG1/40 HS Food Grade	PA	Synthetic elastomer	●	Synthetic elastomer	●	✓	4.00	4.60	40	5	-20	100	MF

Elastomer

NA118	2M8 U0-U-G10 FH	PET	Natural elastomer	●	Fabric with TPU impreg.	●	✓	2.30	2.40	50	8	-20	100	HF
NA998	2M8 U0-U-G10 TP LG	PET	Thermoplastic elastomer	●	Fabric with TPU impreg.	●	✓	2.80	2.70	30	8	-20	100	HF
NA121	2M12 U0-U-G25 GP	PET	Natural elastomer	●	Fabric with TPU impreg.	●	✓	5.50	4.50	60	12	-40	100	HF



NA1749	ChioLink U7 HP LG blue S	-	HP® Polyurethane	●	Mesh, polyester	-		3.60	3.80	75	13	-20	100	HF
NA1625	ChioLink G15 HS FL Food Grade	-	Synthetic elastomer	●	Mesh, polyester	-		4.00	5.50	80	13	-20	100	MF
NA1594	ChioLink G40 MF red	-	Natural elastomer	●	Mesh, polyester	-		6.00	7.50	80	13	-20	100	MF
NA1595	ChioLink G40 HS GP red	-	Synthetic elastomer	●	Mesh, polyester	-		7.00	8.00	80	13	-20	100	HF
NA1797	ChioLink G40 HS GP blue	-	Synthetic elastomer	●	Mesh, polyester	-		7.00	8.00	80	13	-20	100	HF

(1) PA = Polyamide PET = Polyester

(2) Minimum roller diameter is dependent on the joint recommended by Chiorino.

(3) Top cover coefficient of friction: low LF, medium MF, high HF

(4) Minimum pulley diameter is dependent on the running speed.

(5) Pull for 8% elongation.

(6) Weight and minimum diameter for MF belts according to total thickness.
—: knife edge

Explanation of type designation

Cross cutters	Core winders	Tissue	Feeding	Folding-Glueing	Transfer	Compression and delivery	Bridge store (edge)	Cross cutter	Stacking	Feeding	Flexo printing	Cutting & creasing	Folding	Stacking & transfer	Rotary printer page folding	Insertion cassettes winding / unwinding	Stacking	Gathering	Wrapping / Binding	MULTIPURPOSE CONVEYING	Type
PAPER CONVERTING	CARTON BOX FOLDER GLUERS	CORRUGATING		CONVERTING		CORRUGATED CARTON		PRINTING													

✓																					✓	2M8 U0-U-G5 HS FL
																						2M8 U0-U-G15 HS FL
																						2M12 U0-U-G30 HS EN blue
																					✓	2T12 U0-U-G10 HS FH
																						2T12 U0-G25 HS GP
																						2T12 U0-G35 HS GP
																						3M8 U0-U-G10 HS FL
																						3M18 U0-U-G40 HS GP blue
																						DG1/70 HS GP blue
																						DG2/70 HS GP blue
✓																					✓	NT1 HS L
✓																					✓	NT1 HS
✓																					✓	NT2 HS
																					✓	NT3 HS
																					✓	NT4 HS
																						T4R HS
	✓	✓		✓	✓																	DG-E 10/30 HS
	✓	✓		✓	✓																	DG-E 10/40 HS
	✓	✓		✓																		DG-E 10/50 HS
	✓	✓		✓																		DG-E 10/60 HS
✓																						DG1/15 HS
✓				✓	✓																	DG1/30 HS
✓				✓	✓																	DG1/40 HS
✓				✓																		DG2/20 HS
✓				✓																		DG2/30 HS
✓				✓																		DG2/40 HS
✓				✓																		DG2/60 HS
✓				✓	✓																	DG1/30 HS Food Grade
✓				✓	✓																	DG1/40 HS Food Grade

✓																✓	2M8 U0-U-G10 FH
																✓	2M8 U0-U-G10 TP LG
																✓	2M12 U0-G25 GP

									✓			✓	✓									ChioLink U7 HP LG blue S
									✓			✓	✓									ChioLink G15 HS FL Food Grade
									✓			✓	✓									ChioLink G40 MF red
												✓	✓									ChioLink G40 HS GP red
												✓	✓									ChioLink G40 HS GP blue

CONVEYOR AND PROCESS BELTS	
2	Number of plies
M	Textile carcass: M Rigid polyester MT Combined polyester T Flexible polyester
8	Pull for 1% elongation (N/mm)
U	Bottom cover
0	Thickness (mm/10)
U	Possible interply
G	Top cover
15	Thickness (mm/10)
FL	Textures (see photos) Other characteristics
P	Paper & Printing
T	Thermoplastic
1.2	Total thickness (mm/10)
U	Bottom cover
2	Thickness (mm/10)
U	Top cover
5	Thickness (mm/10)
N	Textures (see photos) Other characteristics
EL	Elastic belt without textile carcass
2	Pull for 8% elongation (N/mm)
U	Material
10	Thickness (mm/10)
FL	Textures (see photos)
SILON Non woven	
60	Thickness (mm/10)
HC	Static conductivity (ISO 284)
Coating and interply materials	
G	Elastomer
S	Silicone
TP	Thermoplastic elastomer
U	Polyurethane
V	Polyvinyl chloride (PVC)
Other characteristics	
HP	High performance polyurethane
HS	High performance synthetic elastomer
MF	Self-regenerating elastomer
N	Black colour top cover
SP	Production width up to 3500/3600 mm

SEAMLESS BELTS	
MF	Endless belt (mandrel made)
L	Outer cover HS-W white (40 Sh.A) L raspberry (35 Sh.A) R purple red (45 Sh.A)
351	3 ply polyester fabric and elastomer inner cover
300	3 ply polyester fabric
G	Synthetic rubber, green colour, 65 Sh.A inner cover

The technical data of this table has been formulated under normal environment conditions. They are subject to alteration without notice.

Production program

Code	Type	Traction core (1)	Top cover	Bottom cover	Permanent antistatic (UNI EN ISO 21179)	Total thickness	Weight	Min. diameter (2)	Pull for 1% elongation	Min. temperature resistance	Max. temperature resistance	Comparative coefficient of friction (3)
						mm	kg/m ²	mm	N/mm	°C	°C	



Seamless belts

MF HS W-300	PET	Natural elastomer	○	Polyester fabric	●	✓	6÷12	(6)	(6)	10	-20	100	HF
MF L-300	PET	Natural elastomer	●	Polyester fabric	●	✓	6÷12	(6)	(6)	10	-20	70	HF
MF R-300	PET	Natural elastomer	●	Polyester fabric	●	✓	6÷12	(6)	(6)	10	-20	100	HF
MF HS W-351 G	PET	Natural elastomer	○	Synthetic elastomer	●	✓	6÷12	(6)	(6)	10	-20	100	HF
MF L-351 G	PET	Natural elastomer	●	Synthetic elastomer	●	✓	6÷12	(6)	(6)	10	-20	70	HF
MF R-351 G	PET	Natural elastomer	●	Synthetic elastomer	●	✓	6÷12	(6)	(6)	10	-20	100	HF

Conveyor belts

NA163	2T12 U0-U-G15 MF	PET	Natural elastomer	●	Fabric with TPU impreg.	●	✓	2.80	3.40	50	12	-20	100	HF
NA1275	3M18 U0-G20 MF	PET	Natural elastomer	●	Fabric with TPU impreg.	●	✓	3.50	3.60	100	18	-20	100	HF
NA1418	3M18 U0-U-G40 R MF	PET	Natural elastomer	●	Fabric with TPU impreg.	○	✓	5.70	5.90	100	18	-20	100	HF
NA966	3M18 U0-U-G60 MF	PET	Natural elastomer	●	Fabric with TPU impreg.	○	✓	7.30	8.30	100	18	-20	100	HF
NA245	NT5 MF	PA	Natural elastomer	●	Fabric with TPU impreg.	●	✓	5.00	5.50	50	6	-20	100	HF
CG215	DG1/45 MF	PA	Natural elastomer	●	Synthetic elastomer	●	✓	4.50	5.10	50	5	0	100	HF
CG216	DG2/60 MF	PA	Natural elastomer	●	Synthetic elastomer	●	✓	6.50	7.10	75	7.5	0	100	HF



CG187	PT0.9 0-0	PET-PA	Fabric with TPU impreg.	●	Fabric with TPU impreg.	●	✓	0.90	0.90	10	5	-20	100	LF
CG197	PT0.9 0-0 N	PET-PA	Fabric with TPU impreg.	●	Fabric with TPU impreg.	●	✓	0.90	0.90	10	5	-20	100	LF
NA1472	PT1.0 0-G2	PET	Synthetic elastomer	●	Fabric with TPU impreg.	●	✓	1.00	1.10	15	6	-20	100	MF
NA1034	PT1.0 0-U4	PET	Polyurethane TPU	●	Fabric with TPU impreg.	●	✓	1.00	1.00	10	5	-20	100	HF
NA1111	PT1.0 U1-U3	PET	Polyurethane TPU	●	Polyurethane TPU	●	✓	1.00	1.10	10	5	-20	100	HF
NA1230	PT1.2 0-G2 FL	PET	Synthetic elastomer	●	Fabric with TPU impreg.	●	✓	1.20	1.50	25	6	-20	100	MF
NA1029	PT1.2 U2-U5	PET	Polyurethane TPU	●	Polyurethane TPU	●	✓	1.20	1.30	20	5	-20	100	HF
NA1110	PT1.2 0-U2	PET	Polyurethane TPU	●	Fabric with TPU impreg.	○	✓	1.20	1.30	20	6	-20	100	HF
NA1508	PT1.2/3 0-0	PET	Polyamide fabric	●	Polyamide fabric	●	✓	1.20	1.20	20	8	-20	100	LF
NA1177	PT1.4 EL G3-G3 FL	TPU	Synthetic elastomer	●	Synthetic elastomer	●	✓	1.40	1.50	15	2.5 ⁽⁵⁾	-10	60	HF
NA1176	PT1.4 EL G3-G3 SK	TPU	Synthetic elastomer	●	Synthetic elastomer	●	✓	1.40	1.50	15	2.5 ⁽⁵⁾	-10	60	HF
NA1178	PT1.4 G3-G3	PET	Synthetic elastomer	●	Synthetic elastomer	●	✓	1.40	1.60	15	6	-20	100	HF
NA1120	PT1.5 0-G3 FL	PET	Synthetic elastomer	●	Fabric with TPU impreg.	●	✓	1.50	1.80	25	6	-20	100	MF
NA1151	PT1.8 0-0	PA	Polyamide fabric	●	Polyamide fabric	●	✓	1.80	1.80	20	9	-20	100	LF
NA1433	PT1.8/3 0-0	PET	Polyamide fabric	●	Polyamide fabric	●	✓	1.80	1.80	20	10	-20	100	LF
NA1024	PT1.8 G1-0	PA	Polyamide fabric	○	Synthetic elastomer	●	✓	1.80	1.80	20	9	-20	100	LF

Polyamide

CG3	P0	PA	Synthetic elastomer	●	Fabric with TPU impreg.	●	✓	0.90	1.00	15	2	-20	100	MF
CG1	PR0	PA	Fabric with TPU impreg.	●	Fabric with TPU impreg.	●	✓	1.00	1.10	20	3	0	100	LF
CG172	PR0-L	PA	Fabric with TPU impreg.	●	Fabric with TPU impreg.	●	✓	0.90	0.80	15	2	0	100	LF
CG217	P1	PA	Fabric with TPU impreg.	●	Synthetic elastomer	●	✓	1.40	1.50	25	5	-20	100	LF
CG218	P1-L	PA	Synthetic elastomer	●	Fabric with TPU impreg.	●	✓	1.25	1.20	25	2	-20	100	MF
CG350	P1-L G	PA	Synthetic elastomer	●	Synthetic elastomer	●	✓	1.25	1.28	25	2.5	-20	100	MF
CG219	P2	PA	Fabric with TPU impreg.	●	Synthetic elastomer	●	✓	2.10	2.30	50	7.5	-20	100	LF
NA133	N	PA	Fabric with TPU impreg.	●	Fabric with TPU impreg.	●	✓	0.60	0.60	15	2	-20	100	LF
NA135	N8	PA	Fabric with TPU impreg.	●	Fabric with TPU impreg.	●	✓	1.00	0.90	15	3	-20	100	LF

(1) PA = Polyamide PET = Polyester

(2) Minimum roller diameter is dependent on the joint recommended by Chiorino.

(3) Top cover coefficient of friction: low LF, medium MF, high HF

(4) Minimum pulley diameter is dependent on the running speed.

(5) Pull for 8% elongation.

(6) Weight and minimum diameter for MF belts according to total thickness.
—: knife edge

Textures

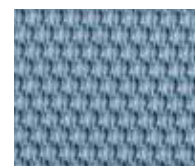
Cross cutters	Core winders	Tissue	Feeding	Folding-Glueing	Transfer	Compression and delivery	Bridge store (edge)	Cross cutter	Stacking	Feeding	Flexo printing	Cutting & creasing	Folding	Stacking & transfer	Rotary printer page folding	Insertion cassettes winding / unwinding	Stacking	Gathering	Wrapping / Binding	MULTIPURPOSE CONVEYING	Type
PAPER CONVERTING	CARTON BOX FOLDER GLUERS	CORRUGATING		CONVERTING		CORRUGATED CARTON								PRINTING							

			✓																			MF HS W-300
			✓																			MF L-300
			✓																			MF R-300
			✓																			MF HS W-351 G
			✓																			MF L-351 G
			✓																			MF R-351 G

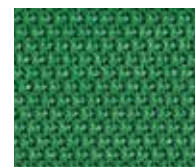
								✓														2T12 U0-U-G15 MF
								✓		✓												3M18 U0-G20 MF
								✓		✓												3M18 U0-U-G40 R MF
										✓												3M18 U0-U-G60 MF
								✓				✓										NT5 MF
			✓	✓	✓			✓				✓		✓		✓						DG1/45 MF
			✓	✓	✓			✓		✓	✓			✓		✓						DG2/60 MF

															✓							PT0.9 0-0
															✓							PT0.9 0-0 N
✓																			✓			PT1.0 0-G2
✓																			✓			PT1.0 0-U4
✓																			✓			PT1.0 U1-U3
✓																			✓			PT1.2 0-G2 FL
✓																			✓			PT1.2 U2-U5
✓																			✓			PT1.2 0-U2
															✓							PT1.2/3 0-0
✓																						PT1.4 EL G3-G3 FL
✓																						PT1.4 EL G3-G3 SK
✓																			✓			PT1.4 G3-G3
✓																			✓			PT1.5 0-G3 FL
															✓							PT1.8 0-0
															✓							PT1.8/3 0-0
															✓							PT1.8 G1-0

✓																✓	✓	✓				P0
✓																						PR0
✓															✓							PR0-L
✓																✓	✓	✓				P1
✓																✓	✓	✓				P1-L
✓																✓	✓	✓				P1-L G
✓																	✓	✓	✓			P2
✓															✓	✓	✓	✓				N
✓															✓	✓	✓	✓				N8



EN



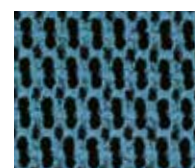
FH



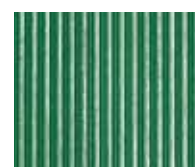
FL



FM



GP



LG



RT



SK



SM

The technical data of this table has been formulated under normal environment conditions. They are subject to alteration without notice.

Production program

Code	Type	Traction core (1)	Top cover	Bottom cover	Permanent antistatic (UNI EN ISO 21179)	Total thickness	Weight	Min. diameter (2)	Pull for 1% elongation	Min. temperature resistance	Max. temperature resistance	Comparative coefficient of friction (3)
						mm	kg/m ²	mm	N/mm	°C	°C	

Polyurethane

NA96	EL2-U10 FL	-	TPU Polyurethane ●	TPU Polyurethane ●	✓	1.00	1.20	10	2 ⁽⁵⁾	-20	60	MF
NA97	EL3-U15 FL	-	TPU Polyurethane ●	TPU Polyurethane ●	✓	1.50	1.60	10	3 ⁽⁵⁾	-20	60	MF
NA405	EL4-U20 FH	-	TPU Polyurethane ●	TPU Polyurethane ●		2.30	2.10	10	4 ⁽⁵⁾	-20	60	MF
NA99	1M6 U0-U5 FL	PET	TPU Polyurethane ●	Fabric with TPU impreg. ●	✓	1.00	1.00	10	6	-20	100	MF
NA100	1M6 U3-U3 FL	PET	TPU Polyurethane ●	TPU Polyurethane ●	✓	1.20	1.30	10	6	-20	100	MF
NA101	1M6 U5-U5 FL	PET	TPU Polyurethane ●	TPU Polyurethane ●	✓	1.60	1.90	20	6	-20	100	MF
NA1568	1DM8 U0-U-F7 A grey	PET	Non woven ●	Fabric with HP® impreg. ●	✓	1.80	1.90	50	8	-20	100	LF
NA716	2M5 U0-U0 HP A	HP® PET	Fabric with HP® impreg. ○	Fabric with HP® impreg. ○	✓	1.00	1.00	↗	6	-30	110	LF
NA789	2M5 U0-U2 HP W A	HP® PET	HP® Polyurethane ○	Fabric with HP® impreg. ●	✓	1.30	1.40	↗	6	-30	110	MF
NA1289	2M12 U0-U2 SP	PET	TPU Polyurethane ●	Fabric with HP® impreg. ●	✓	1.50	1.50	↗	8	-20	100	LF
NA1255	2M10 U0-U2 N HC	PET	TPU Polyurethane ●	Fabric with HP® impreg. ●	✓	1.20	1.40	↗	10	-20	100	LF
NA437	3M18 U0-V-U10	PET	TPU Polyurethane ●	Fabric with HP® impreg. ●	✓	3.70	4.40	100	18	-10	60	LF
NA1334	3M18 U0-V-U10 SP	PET	TPU Polyurethane ●	Fabric with HP® impreg. ●	✓	3.70	4.40	100	18	-10	60	LF
NA1390	PB-265	PET	TPU Polyurethane ●	Fabric with HP® impreg. ●	✓	2.65	2.90	100	15	-20	100	LF

Silicone

NA1102	2M5 U0-U-S2 W	PET	Silicone ○	Fabric with TPU impreg. ○	✓	1.30	1.40	↗	6	-30	100	HF
NA1288	2M5 U0-U-S2 blue	PET	Silicone ●	Fabric with TPU impreg. ○	✓	1.30	1.40	↗	6	-30	100	HF

Silon

NA222	SILON 60 HC	PET	Non woven ●	Non woven ●	✓	5.50	3.40	100	10	-20	120	LF
-------	-------------	-----	-------------	-------------	---	------	------	-----	----	-----	-----	----

PVC

NA509	1M6 U0-V3 N A	PET	PVC ●	Fabric with TPU impreg. ●	✓	0.85	0.85	20	6	-10	60	LF
NA49	2MT5 U0-V3 N	PET	PVC ●	Fabric with TPU impreg. ○	✓	1.80	2.00	20	6	-10	60	LF
NA606	2MT5 U0-V3 SM N	PET	PVC ●	Fabric with TPU impreg. ○	✓	1.80	2.00	20	6	-10	60	LF
NA30	2M8 U0-V5 A	PET	PVC ●	Fabric with TPU impreg. ●	✓	2.00	2.30	30	8	-10	60	MF
NA31	2M8 U0-V5 FM	PET	PVC ●	Fabric with TPU impreg. ●	✓	2.10	2.30	30	8	-10	60	MF
NA189	2M8 U0-V5 FM N	PET	PVC ●	Fabric with TPU impreg. ●	✓	2.10	2.30	30	8	-10	60	HF
NA32	2M8 U0-V17 GP	PET	PVC ●	Fabric with TPU impreg. ●	✓	5.20	3.70	50	8	-10	60	HF
NA218	2M12 U0-V3	PET	PVC ●	Fabric with TPU impreg. ●	✓	1.90	2.10	40	12	-10	60	LF
NA46	2M12 U0-V3 N	PET	PVC ●	Fabric with TPU impreg. ●	✓	1.90	2.10	40	12	-10	60	LF
NA401	2M12 U0-V7 LG	PET	PVC ●	Fabric with TPU impreg. ●	✓	2.40	2.40	40	12	-10	60	HF
NA33	2M12 U0-V8 RT	PET	PVC ●	Fabric with TPU impreg. ●	✓	2.30	2.40	40	12	-10	60	HF
NA34	2M12 U0-V10 A	PET	PVC ●	Fabric with TPU impreg. ●	✓	2.50	2.90	50	12	-10	60	MF
NA48	2M12 U0-V10 N	PET	PVC ●	Fabric with TPU impreg. ●	✓	2.90	3.50	60	12	-10	60	LF
NA258	2M12 U0-V10 RT	PET	PVC ●	Fabric with TPU impreg. ●	✓	2.60	2.60	50	12	-10	60	HF
NA36	2M12 V5-V10	PET	PVC ●	PVC ●		3.00	3.50	80	12	-10	60	MF
NA35	2M12 U0-V20 GP	PET	PVC ●	Fabric with TPU impreg. ●	✓	5.50	3.90	50	12	-10	60	HF
NA40	2T12 U0-V10	PET	PVC ●	Fabric with TPU impreg. ●	✓	2.50	2.90	50	12	-10	60	MF
NA1210	2T12 U0-V10 FM FR	PET	PVC ●	Fabric with TPU impreg. ●	✓	2.30	2.50	50	12	-10	60	MF
NA76	3M18 U0-V15 A	PET	PVC ●	Fabric with TPU impreg. ●	✓	4.20	4.90	100	18	-10	60	MF
NA42	3T18 U0-V15	PET	PVC ●	Fabric with TPU impreg. ●	✓	4.20	4.90	100	18	-10	60	MF

(1) PA = Polyamide PET = Polyester HP® PET= Polyester-HP® system

(2) Minimum roller diameter is dependent on the joint recommended by Chlorino.

(3) Top cover coefficient of friction: low LF, medium MF, high HF

(4) Minimum pulley diameter is dependent on the running speed.

(5) Pull for 8% elongation.

(6) Weight and minimum diameter for MF belts according to total thickness.
↗: knife edge

Explanation of type designation

Cross cutters	Core winders	Tissue	Feeding	Folding-Glueing	Transfer	Compression and delivery	Bridge store (edge)	Cross cutter	Stacking	Feeding	Flexo printing	Cutting & creasing	Folding	Stacking & transfer	Rotary printer page folding	Insertion cassettes winding / unwinding	Stacking	Gathering	Wrapping / Binding	MULTIPURPOSE CONVEYING	Type
PAPER CONVERTING	CARTON BOX FOLDER GLUERS						CORRUGATING			CONVERTING											
							CORRUGATED CARTON								PRINTING						

✓																✓	✓	✓			EL2-U10 FL
✓																✓	✓	✓			EL3-U15 FL
✓																✓	✓	✓			EL4-U20 FH
✓																✓	✓	✓			1M6 U0-U5 FL
✓																✓	✓	✓			1M6 U3-U3 FL
✓																✓	✓	✓			1M6 U5-U5 FL
											✓										1DM8 U0-U-F7 A grey
✓		✓																			2M5 U0-U0 HP A
		✓																			2M5 U0-U2 HP W A
		✓																			2M12 U0-U2 SP
		✓																			2M10 U0-U2 N HC
											✓										3M18 U0-V-U10
											✓										3M18 U0-V-U10 SP
											✓										PB-265

		✓																			2M5 U0-U-S2 W
		✓																			2M5 U0-U-S2 blue

						✓															SILON 60 HC
--	--	--	--	--	--	---	--	--	--	--	--	--	--	--	--	--	--	--	--	--	-------------

		✓																			1M6 U0-V3 N A
✓		✓																✓			2MT5 U0-V3 N
		✓																✓			2MT5 U0-V3 SM N
								✓													2M8 U0-V5 A
						✓		✓													2M8 U0-V5 FM
								✓													2M8 U0-V5 FM N
												✓									2M8 U0-V17 GP
✓					✓																2M12 U0-V3
								✓													2M12 U0-V3 N
✓																		✓			2M12 U0-V7 LG
✓																		✓			2M12 U0-V8 RT
												✓	✓								2M12 U0-V10 A
								✓													2M12 U0-V10 N
																		✓			2M12 U0-V10 RT
					✓																2M12 V5-V10
										✓		✓		✓							2M12 U0-V20 GP
✓																		✓			2T12 U0-V10
✓																		✓			2T12 U0-V10 FM FR
											✓	✓						✓			3M18 U0-V15 A
																		✓			3T18 U0-V15

The technical data of this table has been formulated under normal environment conditions. They are subject to alteration without notice.

CONVEYOR AND PROCESS BELTS	
2	Number of plies
M	Textile carcass: M Rigid polyester MT Combined polyester T Flexible polyester
8	Pull for 1% elongation (N/mm)
U	Bottom cover
0	Thickness (mm/10)
U	Possible interply
G	Top cover
15	Thickness (mm/10)
FL	Textures (see photos) Other characteristics
P	Paper & Printing
T	Thermoplastic
1.2	Total thickness (mm/10)
U	Bottom cover
2	Thickness (mm/10)
U	Top cover
5	Thickness (mm/10)
N	Textures (see photos) Other characteristics
EL	Elastic belt without textile carcass
2	Pull for 8% elongation (N/mm)
U	Material
10	Thickness (mm/10)
FL	Textures (see photos)
SILON Non woven	
60	Thickness (mm/10)
HC	Static conductivity (ISO 284)
Coating and interply materials	
G	Elastomer
S	Silicone
TP	Thermoplastic elastomer
U	Polyurethane
V	Polyvinyl chloride (PVC)
Other characteristics	
HP	High performance polyurethane
HS	High performance synthetic elastomer
MF	Self-regenerating elastomer
N	Black colour top cover
SP	Production width up to 3500/3600 mm
SEAMLESS BELTS	
MF	Endless belt (mandrel made)
L	Outer cover HS-W white (40 Sh.A) L raspberry (35 Sh.A) R purple red (45 Sh.A)
351	3 ply polyester fabric and elastomer inner cover
300	3 ply polyester fabric
G	Synthetic rubber, green colour, 65 Sh.A inner cover

HEADQUARTERS AND PRODUCTION PLANTS

CHIORINO S.p.A.

Via S. Agata, 9
I-13900 Biella, Italy

Tel. +39 015 8489 1
Fax +39 015 8489 161

chiorino@chiorino.com
www.chiorino.com



CHIORINO AFFILIATED COMPANIES

America

CHIORINO AMERICA Inc.
Suwanee, GA
Tel. +1-302-292-1906
info@chiorino.us
www.chiorino.us

SAFARI BELTING SYSTEMS, Inc.
Olathe, KS
Tel. +1-888-662-6611
info@safaribelting.com
www.safaribelting.com

Australia

CHIORINO AUSTRALIA Pty.
Ltd. - Brisbane
Tel. +61-7-32741900
sales@chiorino.com.au
www.chiorino.com.au

Benelux

CHIORINO BENELUX B.V.
Utrecht - Netherlands
Tel. +31-302-413-060
chiorino@chiorino.nl
www.chiorino.nl

Czech Republic

REKO s.r.o.
Jaromer
Tel. +420-491-840012
info@reko-sro.cz
www.reko-sro.cz

France

CHIORINO SAS
Lagny, Paris
Tel. +33-1-64304075
chiorino.paris@chiorino.fr
www.chiorino.fr

Germany

CHIORINO GmbH
Mainz
Tel. +49-(0)6131-55449-0
info@chiorino.de
www.chiorino.de

Hungary

CHIORINO Kft.
Szigetszentmiklós, Budapest
Tel. +36-24-525930
mail@chiorino.hu
www.chiorino.hu

India

FRANSTEK BELTS PRIVATE Ltd.
Salcete Goa
Tel. +91 93709 18733
info@chiorino.in
www.chiorino.in

Italy

CHIORINO PARMA s.r.l.
Parma
Tel. +39-0521-292236
chiorinoparma@chiorino.com

CHIORINO VENETO s.r.l.
Colle Umberto (TV)
Tel. +39-0438-430460
chiorinoveneto@chiorino.com

KRUSE srl - Torino
Tel. +39-011-2236878
info@kruseonline.com

Poland

CHIORINO Sp. z o.o.
Bydgoszcz
Tel. +48-(0)52-3487708
chiorino@chiorino.com.pl
www.chiorino.com.pl

Portugal

CHIORINO PORTUGAL, LDA
Alfena Valongo, Porto
Tel. +351-229684442
geral@chiorino.pt
www.chiorino.pt

Romania

CHIORINO srl
Sannicoara, Jud.Cluj Napoca
Tel. +40-264-432977
chiorino@chiorino.ro
www.chiorino.ro

Slovakia

CHIORINO SLOVAKIA s.r.o.
Nové Zámky
Tel. +421-910-486654
info@chiorino.sk
www.chiorino.sk

South Africa

CHIORINO SOUTH AFRICA
Pty. Ltd. - Johannesburg
Tel. +27-11-3971268
sales@chiorino.co.za
www.chiorino.com

Spain

CHIORINO IBERICA S.A.
Rubí, Barcelona
Tel. +34-93-5860480
chiorino@chiorino.es
www.chiorino.es

Switzerland

CHIORINO SCHWEIZ GmbH
Wetzikon
Tel. +41-(0)43-3116001
info@chiorino.ch
www.chiorino.ch

Ukraine

CHIORINO UKRAINE LLC
Poltava region, Shcherbani village
Tel. +38-050806560
office@chiorino.com.ua
chiorino.com.ua

United Kingdom

CHIORINO U.K. Ltd.
Glasshoughton
Tel. +44-1977-691880
sales@chiorino.co.uk
www.chiorino.co.uk

Chiorino operates all over the world through the Group companies and more than 100 distributors.

More info on www.chiorino.com

