

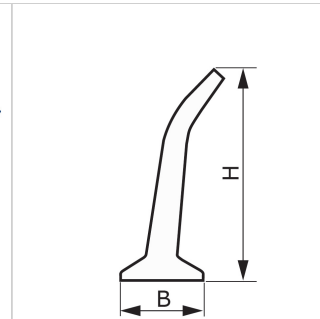
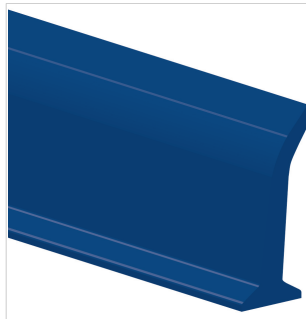


CODE	ES998		TYPE	L80 U HP blue 55D AM	
DESCRIPTION					
PU HP® inclined lateral profile.					
PRODUCT SYSTEM 					
TECHNICAL SPECIFICATIONS					
Material	Polyurethane (TPU) - HP® system				
Hardness	55 ±5 Sh.A				
Colour	HP® blue				
Base	Flat				
B Upper base	10.0 mm	0.39	in.		
b Bottom base	---	---	in.		
H Height	80.0 mm	3.15	in.		
Weight	45 gr/m	0.040	oz/in.		
Minimum pitch					
■ longitudinal	---	---	in.		
■ transversal	40 mm	1.6	in.		
Minimum pulley diameters ⁽¹⁾					
■ longitudinal-driving side	---	---	in.		
■ longitudinal-conveying side	---	---	in.		
■ transversal-conveying side	40 mm	1.6	in.		
⁽¹⁾ Minimum pulley diameters referred to environment conditions of 20°C					
Temperature resistance ⁽²⁾	min.	-30 °C	-22	°F	
	max	80 °C	176	°F	
⁽²⁾ Use with limit values may reduce its life					
Roll/bar sizes	2.1 m	6.9	ft		
COMPLIANCES					
REACH EC 1907/2006 Regulation and Amendments EC 1935/2004 Regulation and Amendments EC 2023/2006 Regulation and Amendments EU 10/2011, 2023/1442 Regulation and Amendments HACCP (Hazard Analysis and Critical Control Points) FDA (Food and Drug Administration)					
METHOD OF APPLICATION					
- High frequency welding					
NOTES					



Issue: 13-03-2023

Last Update: 20-04-2023

DISCLAIMER

The information contained in this document describes the features of the CHIORINO product as tested in a laboratory environment at a temperature of +23 degrees °C at 50% relative humidity. It does not necessarily reflect the conditions of industrial use and it does not guarantee the product to be suitable for certain applications. The client remains liable for the proper selection and correct use of the CHIORINO product. CHIORINO cannot be held responsible should damages arise from the use of its products. Necessary alterations to this data can be made without prior notice.