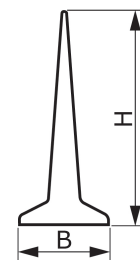
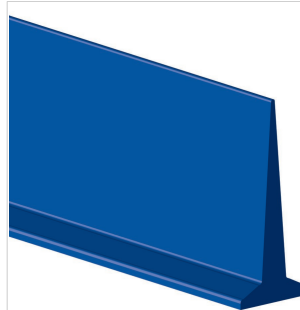


**CODE ES897**
**TYPE**
**T40 TPO blue**
**DESCRIPTION**

Polyolefin lateral profile, straight.


**TECHNICAL SPECIFICATIONS**

Material Thermoplastic Polyolefin (TPO)

Hardness 92 ±5 Sh.A

Colour Blue

Base Flat

B Upper base 10.0 mm 0.39 in.

b Bottom base --- mm --- in.

H Height 40.0 mm 1.57 in.

Weight 148 gr/m 0.132 oz/in.

Minimum pitch

■ longitudinal --- mm --- in.

■ transversal 40 mm 1.6 in.

 Minimum pulley diameters<sup>(1)</sup>

■ longitudinal-driving side --- mm --- in.

■ longitudinal-conveying side --- mm --- in.

■ transversal-conveying side 40 mm 1.6 in.

<sup>(1)</sup> Minimum pulley diameters referred to environment conditions of 20°C

 Temperature resistance<sup>(2)</sup> min. -40 °C -40 °F

max. 60 °C 140 °F

<sup>(2)</sup> Use with limit values may reduce its life

Roll/bar sizes 2.4 m 7.9 ft

**COMPLIANCES**

 REACH EC 1907/2006 Regulation and Amendments  
 EC 1935/2004 Regulation and Amendments  
 EC 2023/2006 Regulation and Amendments  
 EU 10/2011, 2023/1442 Regulation and Amendments  
 FDA (Food and Drug Administration)

**METHOD OF APPLICATION**

- High frequency welding

**NOTES**

Issue: 30-03-2022

Last Update: 4-04-2022

**DISCLAIMER**

The information contained in this document describes the features of the CHIORINO product as tested in a laboratory environment at a temperature of +23 degrees °C at 50% relative humidity. It does not necessarily reflect the conditions of industrial use and it does not guarantee the product to be suitable for certain applications. The client remains liable for the proper selection and correct use of the CHIORINO product. CHIORINO cannot be held responsible should damages arise from the use of its products. Necessary alterations to this data can be made without prior notice.