

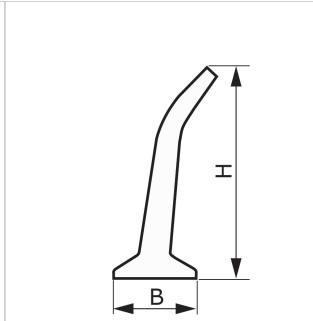
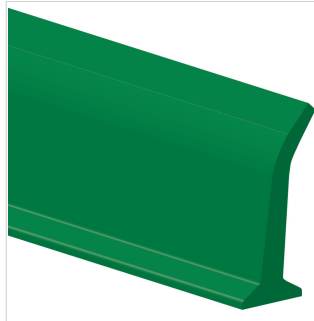


CODE	ES541		TYPE	L20 U HP	
DESCRIPTION					
PU HP® inclined lateral profile.					
 PRODUCT SYSTEM					
TECHNICAL SPECIFICATIONS					
Material	Polyurethane (TPU) - HP® system				
Hardness	70 ±5 Sh.A				
Colour	Green				
Base	Flat				
B Upper base	10.0 mm	0.39	in.		
b Bottom base	---	---	in.		
H Height	20.0 mm	0.79	in.		
Weight	914 gr/m	0.813	oz/in.		
Minimum pitch					
■ longitudinal	---	---	in.		
■ transversal	40 mm	1.6	in.		
Minimum pulley diameters ⁽¹⁾					
■ longitudinal-driving side	---	---	in.		
■ longitudinal-conveying side	---	---	in.		
■ transversal-conveying side	40 mm	1.6	in.		
⁽¹⁾ Minimum pulley diameters referred to environment conditions of 20°C					
Temperature resistance ⁽²⁾					
	min.	-30 °C	-22	°F	
	max	70 °C	158	°F	
⁽²⁾ Use with limit values may reduce its life					
Roll/bar sizes	2.4 m	7.9	ft		
COMPLIANCES					
REACH EC 1907/2006 Regulation and Amendments EC 1935/2004 Regulation and Amendments EC 2023/2006 Regulation and Amendments EU 10/2011, 2017/752 Regulation and Amendments HACCP (Hazard Analysis and Critical Control Points) FDA (Food and Drug Administration) HALAL (World Halal Authority)					
					
METHOD OF APPLICATION					
- High frequency welding					
NOTES					


DISCLAIMER

The information contained in this document describes the features of the CHIORINO product as tested in a laboratory environment at a temperature of +23 degrees °C at 50% relative humidity. It does not necessarily reflect the conditions of industrial use and it does not guarantee the product to be suitable for certain applications. The client remains liable for the proper selection and correct use of the CHIORINO product. CHIORINO cannot be held responsible should damages arise from the use of its products. Necessary alterations to this data can be made without prior notice.